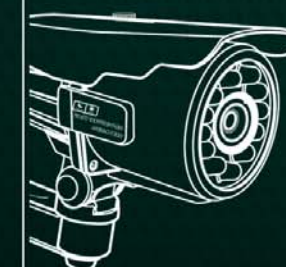



SECU POINTER

Security world, Security Leader, Security Pointer

Since our founding in 2003, Secupointer has continuously researched and developed new and innovative technologies. Our goal is to make it possible for human beings to lead safe and happy lives and to be one of the leading security product manufacturers in our area of expertise. Secupointer has already become a leading and one of the most innovative of manufacturers.



 **Secupointer Co.,Ltd.**

URL : <http://www.secupointer.com>

Office : 601, Ilsan Techno Town, 1141-1, Baeksuk Dong, Ilsan Dong Gu, KoyangSI, Kyunggi-Do, Korea, 411722

Tel: 82-70-7556-7545 **Fax:** 82-31-907-7338

Sales: sales@secupointer.com

Tech Support: tech-support@dajabacctv.com

Account: account@dajabacctv.com

 **Secupointer Co.,Ltd.**

VISION

Since our founding in 2003, Secupointer has continuously researched and developed new and innovative technologies. Our goal is to make it possible for human beings to lead safe and happy lives and to be one of the leading security product manufacturers in our area of expertise.

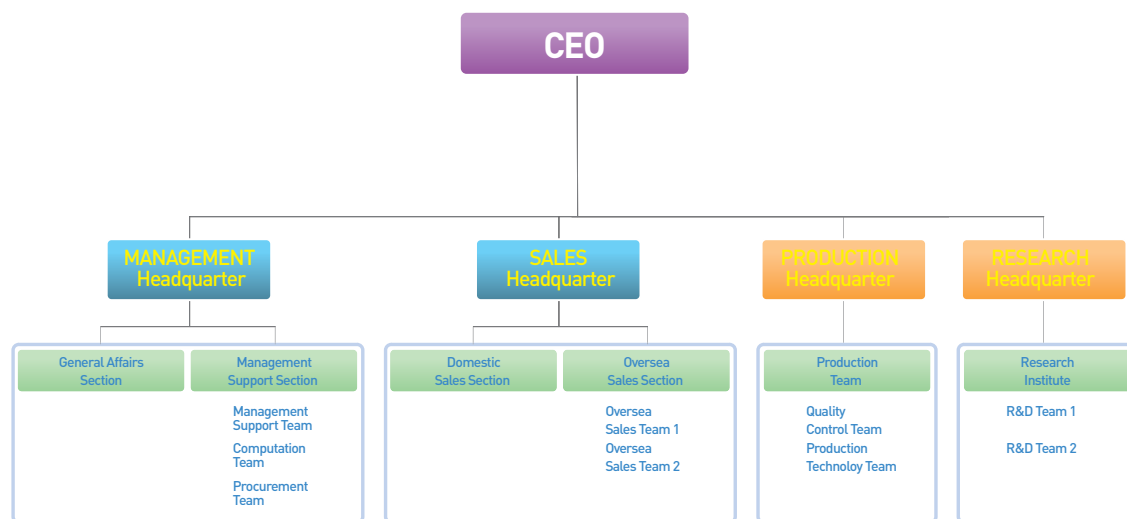
Secupointer has already become a leading and one of the most innovative of manufacturers. We offer more than just the high-performance products such as the night vision camera which works at very long distances and search lights which have been used at military sites. Our IR D&N cameras also do not have a dead zone or time toleration. Also, all are time accessible from all over the world. The new work camera and the PTZ robot camera capture in all directions. We also have image recorders etc.

We here at Secupointer promise all our partners around the world to offer you the best, most enthusiastic, speedy and pertinent support.

TECHNOLOGY

To offer high performance and to not tolerate dead times or dead zones, Secupointer has designed all our products to overcome any situation which may arise. Our products have been delivered to the military and governmental organizations. At the center of all Secupointer products is the quality of being comprehensively cost effective while at the same time offering high performance, Micom-controlled systems.

ORGANIZATION



CCTV / MILITARY CAMERA



SPD100IR-2133DNP SET

- 1/4" Sony CCD
- High-definition 30x Zoom lens built-In
- Minimum illumination: 0.0000 Lux.
- Max. visibility range: About 300m
- 20mm 8EA IR + IR Illuminator 2EA
- Die-cast aluminum case for
- Indoor/outdoor use, pan/tilt driver employed, IP54
- Preset & auto pan supported (Optional)
- External OSD Menu Control



SPD100IR-IRZOOM

- 1/4" Sony CCD
- High-definition 30x Zoom lens built-In
- Minimum illumination: 0.0000 Lux.
- Max. visibility range: About 300m
- 20mm 8EA IR + IR Illuminator 2EA
- External OSD Menu Control
- DC 12V



SPD100IR-IRZOOM

- 1/4" Sony CCD
- High-definition 30x Zoom lens built-In
- Minimum illumination: 0.0000 Lux.
- 20mm 8EA IR + 20mm IR Illuminator 2EA
- Max. visibility range: About 150m
- External OSD Menu Control



SPIR-2133DNP

- 1/4" Sony CCD
- High-definition 30x Zoom lens built-In
- Minimum illumination: 0.0000 Lux.
- 20mm 8EA LED
- Max. visibility range: About 100m
- External OSD Menu Control



SPIRN-B30VAH

- 1/3" Sony CCD
- 5-50mm Vari focal Lens built in
- Minimum illumination: 0.0000 Lux.
- Max. visibility range: About 80m
- 10mm 30EA LED
- Extra Video Out
- External DC IRIS, AGC & BLC adjustment

CCTV / WDR (WIDE DYNAMIC RANGE) CAMERA



- SPVC-NBT1445D**
- 1/3" SONY New Super HAD CCD (410K Pixel)
 - WDR (Wide Dynamic Range)
 - DNR (Digital Noise Reduction)
 - DIS (Digital Image Stabilizer)
 - TDN (True Day & Night) (ICR)
 - Motion Detection (8Zone)
 - Privacy Making (8Zone)
 - Sense-Up (X2-X256), Digital Zoom (X10)
 - 580 (Color) / 700 (BW) TVline
 - 0.00004 Lux at CDS Sensor on
 - DC Varifocal Lens 4-9mm
 - Built In 45 IR LED
 - Power DC12V
 - Built in OSD Menu
 - Waterproof & Vandal Proof
 - Cable managed bracket



- SPVC-NBT1410D**
- 1/3" SO HAD CCD (410K Pixel)
 - WDR / DNR / DIS / TDN
 - Motion & Privacy - 8Zone
 - 580 (Color) / 700 (BW) TVline
 - 0.00004 Lux sense up
 - Built-In 5-60mm DC Iris lens
 - Built in OSD Menu



- SPVC-NBT1400D**
- 1/3" SO HAD CCD (410K Pixel)
 - WDR / DNR / DIS / TDN
 - Motion & Privacy - 8Zone
 - 580 (Color) / 700 (BW) TVline
 - 0.00004 Lux sense up
 - Built-In 4-9mm DC Iris lens
 - Built in OSD Menu
 - Waterproof & Vandal Proof
 - 3-Axis mounting capabilities



- SPVC-NBT1450D**
- 1/3" SO HAD CCD (410K Pixel)
 - WDR / DNR / DIS / TDN
 - Motion & Privacy - 8Zone
 - 580 (Color) / 700 (BW) TVline
 - Super 16IR LED
 - 0.00004 Lux sense up
 - Built-In 5-60mm DC Iris lens
 - Built in OSD Menu
 - Waterproof & Vandal Proof
 - Cable managed bracket



- SPVC-DT1410D**
- 1/3" SO HAD CCD (410K Pixel)
 - WDR / DNR / DIS / TDN
 - Motion & Privacy - 8Zone
 - 580 (Color) / 700 (BW) TVline
 - 0.00004 Lux sense up
 - Built-In 4-9mm DC Iris lens
 - 3-Axis mounting capabilities



- SPVC-NVDT1400D**
- 1/3" SO HAD CCD (410K Pixel)
 - WDR / DNR / DIS / TDN
 - Motion & Privacy - 8Zone
 - 580 (Color) / 700 (BW) TVline
 - 0.00004 Lux sense up
 - Built-In 4-9mm DC Iris lens
 - Built in OSD Menu
 - Waterproof & Vandal Proof
 - Cable managed bracket



- SPVC-140**
- 1/3" SO HAD CCD (410K Pixel)
 - WDR / DNR / DIS
 - Motion Detection (8Zone)
 - Privacy Making (8Zone)
 - 580 (Color) / 700 (BW) TVline
 - 0.00004 Lux sense up
 - Built in OSD Menu
 - Power: DC12V or AC24V



- SPVC-DT1445D**
- 1/3" SO HAD CCD (410K Pixel)
 - WDR / DNR / TDN
 - 580 (Color) / 700 (BW) TVline
 - 0.00004 Lux at CDS Sensor on
 - Built In 45 IR LED
 - Built-In 4-9mm DC Iris lens
 - 3-Axis mounting capabilities

CCTV / TDN (ICR TRUE DAY & NIGHT) CAMERA



- SPVC-NBT1350D**
- 1/3" SONY New Super HAD CCD (410K Pixel)
 - DNR (Digital Noise Reduction)
 - DIS (Digital Image Stabilizer)
 - TDN (True Day & Night) (ICR)
 - Motion Detection (8Zone)
 - Privacy Making (8Zone)
 - Sense-Up (X2-X256), Digital Zoom (X10)
 - 580 (Color) / 700 (BW) TVline
 - 0.00004 Lux at CDS Sensor on
 - DC Varifocal Lens 5-60mm
 - Built In 45 IR LED
 - Power DC12V
 - Built in OSD Menu
 - Waterproof & Vandal Proof
 - Cable managed bracket



- SPVC-NBT1300D**
- 1/3" SO HAD CCD (410K Pixel)
 - DNR / DIS / TDN
 - Motion & Privacy - 8Zone
 - 580 (Color) / 700 (BW) TVline
 - 0.00004 Lux sense up
 - Built-In 4-9mm DC Iris lens
 - Built in OSD Menu
 - Waterproof & Vandal Proof
 - Cable managed bracket



- SPVC-NBT1345D**
- 1/3" SO HAD CCD (410K Pixel)
 - DNR / DIS / TDN
 - Motion & Privacy - 8Zone
 - 580 (Color) / 700 (BW) TVline
 - Built In 45 IR LED
 - 0.00004 Lux at CDS Sensor on
 - Built-In 4-9mm DC Iris lens
 - Built in OSD Menu
 - Waterproof & Vandal Proof
 - Cable managed bracket



- SPVC-NVDT1300D**
- 1/3" SO HAD CCD (410K Pixel)
 - DNR / DIS / TDN
 - Motion & Privacy - 8Zone
 - 580 (Color) / 700 (BW) TVline
 - 0.00004 Lux sense up
 - Built-In 4-9mm DC Iris lens
 - 3-Axis mounting capabilities



- SPVC-DT1310D**
- 1/3" SO HAD CCD (410K Pixel)
 - DNR / DIS / TDN
 - Motion & Privacy - 8Zone
 - 580 (Color) / 700 (BW) TVline
 - 0.00004 Lux sense up
 - Built-In 4-9mm DC Iris lens
 - Built in OSD Menu
 - Waterproof & Vandal Proof
 - 3-Axis mounting capabilities



- SPVC-DT1300D**
- 1/3" SO HAD CCD (410K Pixel)
 - DNR / DIS / TDN
 - Motion & Privacy - 8Zone
 - 580 (Color) / 700 (BW) TVline
 - 0.00004 Lux sense up
 - Built-In 4-9mm DC Iris lens
 - 3-Axis mounting capabilities



- SPVC-DT1340D**
- 1/3" SO HAD CCD (410K Pixel)
 - DNR / TDN
 - 580 (Color) / 700 (BW) TVline
 - 0.00004 Lux sense up
 - Built-In 4-9mm DC Iris lens
 - Waterproof & Vandal Proof
 - External Zoom / Focal adjustment
 - 3-Axis mounting capabilities



- SPVC-DT1345D**
- 1/3" SO HAD CCD (410K Pixel)
 - DNR / TDN
 - 580 (Color) / 700 (BW) TVline
 - 0.00004 Lux at CDS Sensor on
 - Waterproof & Vandal Proof
 - Built-In 4-9mm DC Iris lens
 - 3-Axis mounting capabilities

CCTV / PTZ ROBOT CAMERA



DSC-2000SE

- 1/4" SONY Super HAD CCD
- 33x Automatic Focus Optical Zoom (10X Digital)
- Horizontal Resolution-More than 520TV Lines
- TDN (True Day & Night) (ICR)
- Min. Illumination 0.00005 Lux with Built-in DSS
- SSNR (Noise Reduction at Low light)
- DIS (Digital Image Stabilizer)
- 250 Programmable Preset Positions
- Smart Zoom (Speed control by Zoom ratio)
- Swing, Group, Trace, Spiral, Auto Flip, Alarm
- 8 Privacy Masking Zones
- Motion Detection
- Suits for Factory, Military Base, Outside Building etc.
- Protection for Low Voltage
- Weatherproof (IP66)
- Option: Indoor



DSC-1000SE

- 1/4" So Progressive Scan CCD,
- 23x Auto Focus Optical Zoom
- TDN Hitachi Module
- 0.009 Lux with DSS
- WDR (Wide Dynamic Range)
- 250 Preset Positions, Swing, Group
- 8 Privacy Masking & Motion
- Weatherproof (IP66)
- Option: Indoor



DSC-240SE

- 1/4" SONY Super HAD CCD
- TDN (True Day & Night) (ICR)
- DIS (Digital Image Stabilizer)
- TDN Hitachi Module
- 0.007 Lux with DSS
- 250 Preset Positions
- Weatherproof (IP66)
- Option: Indoor



DSC-300Se5

- 1/4" So Progressive Scan CCD,
- 35x Auto Focus Optical Zoom
- WDR (Wide Dynamic Range)
- TDN Hitachi Module
- 0.001 Lux with Sense Up
- 250 Preset Positions, Swing, Group
- 8 Privacy Masking & Motion
- Option: Indoor



DSC-600SE

- 1/4" So Double Density interline CCD
- 37x Auto Focus Optical Zoom
- 0.001 Lux with DSS
- SSNR (Noise Reduction at Low Light)
- WDR (Wide Dynamic Range)
- DIS (Digital Image Stabilizer)
- 250 Preset Positions, Swing, Group
- 16 Privacy Masking Zone
- Option: Indoor



DSC-300SE

- 1/4" So Progressive Scan CCD,
- 23x Auto Focus Optical Zoom
- WDR (Wide Dynamic Range)
- TDN Hitachi Module
- 0.009 Lux with DSS
- 250 Preset Positions, Swing, Group
- 8 Privacy Masking & Motion
- Option: Indoor



WCA-E261

- 1/4" SONY Super HAD CCD
- 26x Optical zoom lens
- TDN (True Day & Night) (ICR)
- DIS (Digital Image Stabilizer)
- 63 Preset Positions
- 8 Tours, 4 Scan / Pattern & Auto scan
- Weatherproof (IP66)



PS-100NP

- 1/4" SONY Super HAD CCD
- 10x Optical zoom lens
- TDN (True Day & Night) (ICR)
- DIS (Digital Image Stabilizer)
- 63 Preset Positions
- 8 Tours, 4 Scan / Pattern & Auto scan
- Option: outdoor

CCTV / STANDARD BOX CAMERA



SPVC-140

- 1/3" SONY New Super HAD CCD (410K Pixel)
- WDR (Wide Dynamic Range)
- DNR (Digital Noise Reduction)
- DIS (Digital Image Stabilizer)
- TDN (True Day & Night) (ICR)
- Motion Detection (8Zone)
- Privacy Making (8Zone)
- Sense-Up (X2-X256), Digital Zoom (X10)
- 580 (Color) / 700 (B/W) TV Lines
- 0.0004 LUX at Sensor on
- Built in OSD Menu
- Option: DC12V / AC24V



SPVC-110

- 1/3" SO NewHAD CCD
- Motion Detection (64Zone)
- Privacy Making (4Zone)
- Flickerless
- Mirror
- 550 (Color) / 600 (B/W) TV Line
- 0.05 LUX at F1.2
- Built in OSD Menu
- Option: DC12V / AC24V



SPVC-100

- 1/3" SO NewHAD CCD
- Motion Detection (64Zone)
- Privacy Making (4Zone)
- Flickerless
- Mirror
- 420 TV Lines (Color)
- 0.1 LUX at F1.2
- Built in OSD Menu
- Option: DC12V / AC24V



SPVC-130

- 1/3" SO NewHAD CCD (410K Pixel)
- DNR (Digital Noise Reduction)
- DIS (Digital Image Stabilizer)
- Privacy Making & Mitoon (8Zone)
- Sense-Up (X2-X256)
- 580 (Color) / 700 (B/W) TV Lines
- 0.0004 LUX at Sensor on
- Built in OSD Menu
- Option: DC12V / AC24V



SPVC-120

- 1/3" SO NewHAD CCD
- DNR (Digital Noise Reduction)
- Privacy Making & Mitoon (4Zone)
- Sense-Up (X2-X128)
- 580 (Color) / 700 (B/W) TV Lines
- 0.002 LUX at CDS Sensor on
- Built in OSD Menu
- Option: DC12V / AC24V



SP-240SC

- 1/3" SO NewHAD CCD
- BLC (Back Light Compensation)
- Flickerless
- Vivid sharp images
- Day & Night Function
- 420 TV Lines (Color)
- 0.05 LUX at F1.2
- Power: DC12V



SP-540SC

- 1/3" SO NewHAD CCD
- BLC (Back Light Compensation)
- Flickerless
- Vivid sharp images
- Day & Night Function
- 550 TV Lines
- 0.05 LUX at F1.2
- Power: DC12V



SP-640SC

- 1/3" SO NewHAD CCD
- DNR (Digital Noise Reduction)
- Privacy Making & Mitoon (4Zone)
- Sense-Up (X2-X128)
- 580 (Color) / 700 (B/W) TV Lines
- 0.002 LUX at Sensor on
- Built in OSD Menu
- Power: DC12V

CCTV / IR & BULLET CAMERA



SPVC-NBI1350D

- 1/3" SO HAD CCD (410K Pixel)
- DNR / DIS
- Motion & Privacy - 8Zone
- 580 (Color) / 700 (BW) TVLine
- Sense-Up (X2-X256)
- 0.000 LUX at CDS Sensor on
- Built In Super 16 IR LED
- Built-In 5-60mm DC Iris lens
- Built in OSD Menu
- Waterproof & Vandal Proof

SPVC-NBI1150D

- 1/3" SO HAD CCD (410K Pixel)
- Motion 64Area
- Privacy Masking 4 Zone
- 550 (Color) / 600 (BW) TVLine
- 0.000 LUX at CDS Sensor on
- Built In Super 16 IR LED
- Built-In 5-60mm DC Iris lens
- External Zoom/Focal adjustment
- Waterproof & Vandal Proof



SPVC-NBT11345D

- 1/3" SO New HAD CCD (410K Pixel)
- DNR (Digital Noise Reduction)
- DIS (Digital Image Stabilizer)
- TDN (True Day & Night) (ICR)
- Motion Detection (8Zone)
- Privacy Making (8Zone)
- Sense-Up (X2-X256), Digital Zoom (X10)
- 580 (Color) / 700 (BW) TV Lines
- 0.000 LUX at CDS Sensor on
- DC Varifocal Lens 4-9mm
- Built In 45 IR LED
- Power DC12V
- Built in OSD Menu
- Waterproof & Vandal Proof
- Cable managed bracket



SPVC-BI1155

- 1/3" SO HAD CCD (410K Pixel)
- 550 (Color) / 600 (BW) TVLine
- 0.000 LUX at CDS Sensor on
- Built In 55 IR LED
- Fixed Lens 6mm
- Waterproof & Vandal Proof

SPVC-BI1055

- 1/3" SO HAD CCD
- 420 TVLine
- 0.000 LUX at CDS Sensor on
- Built In 55 IR LED
- Fixed Lens 6mm
- Waterproof & Vandal Proof



SPVC-NBI1155

- 1/3" SO HAD CCD (410K Pixel)
- 550 (Color) / 600 (BW) TVLine
- 0.000 LUX at CDS Sensor on
- Built In 55 IR LED
- Fixed Lens 6mm
- Waterproof & Vandal Proof
- Cable managed bracket

SPVC-NBI1055

- 1/3" SO HAD CCD
- 420 TVLine
- 0.000 LUX at CDS Sensor on
- Built In 55 IR LED
- Fixed Lens 6mm
- Waterproof & Vandal Proof
- Cable managed bracket



SPIRN-50H

- 1/3" SO HAD CCD (410K Pixel)
- 550 (Color) / 600 (BW) TVLine
- 0.000 LUX at CDS Sensor on
- Built In 50R LED
- Fixed Lens 4mm
- Waterproof & Vandal Proof

SPIRN-50

- 1/3" SO HAD CCD
- 420 TVLine
- 0.000 LUX at CDS Sensor on
- Built In 50 IR LED
- Fixed Lens 4mm
- Waterproof & Vandal Proof



SPVC-NB1310D

- 1/3" SO HAD CCD (410K Pixel)
- DNR / DIS
- Motion & Privacy - 8Zone
- 580 (Color) / 700 (BW) TVLine
- Sense-Up (X2-X256)
- 0.00004 LUX at Sensor on
- Built-In 5-60mm DC Iris lens
- Built in OSD Menu

SPVC-NB1110D

- 1/3" SO HAD CCD (410K Pixel)
- Motion 64Area
- Privacy Masking 4 Zone
- 550 (Color) / 600 (BW) TVLine
- 0.05 LUX at F1.2
- Built-In 5-60mm DC Iris lens
- External Zoom/Focal adjustment
- Waterproof & Vandal Proof



SPVC-NBI1345D

- 1/3" SO HAD CCD (410K Pixel)
- DNR / DIS
- Motion & Privacy - 8Zone
- 580 (Color) / 700 (BW) TVLine
- Sense-Up (X2-X256)
- 0.000 LUX at CDS Sensor on
- Built In 45 IR LED
- Built-In 4-9mm DC Iris lens
- Built in OSD Menu
- Waterproof & Vandal Proof

SPVC-NBI1145D

- 1/3" SO HAD CCD (410K Pixel)
- Motion 64Area
- Privacy Masking 4 Zone
- 550 (Color) / 600 (BW) TVLine
- 0.000 LUX at CDS Sensor on
- Built In 45 IR LED
- Built-In 4-9mm DC Iris lens
- External Zoom/Focal adjustment



SPIRN-24H

- 1/3" SO HAD CCD (410K Pixel)
- 550 (Color) / 600 (BW) TVLine
- 0.000 LUX at CDS Sensor on
- Built In 24R LED
- Fixed Lens 4mm
- Waterproof & Vandal Proof

SPIRN-24

- 1/3" SO HAD CCD
- 420 TVLine
- 0.000 LUX at CDS Sensor on
- Built In 24 IR LED
- Fixed Lens 4mm
- Waterproof & Vandal Proof



SPVC-BI1145V

- 1/3" SO HAD CCD (410K Pixel)
- 550 (Color) / 600 (BW) TVLine
- 0.000 LUX at CDS Sensor on
- Built In 45 IR LED
- Varifocal Lens 4-9mm
- External Zoom/Focal adjustment
- Waterproof & Vandal Proof
- Cable managed bracket

SPVC-BI1045V

- 1/3" SO HAD CCD
- 420 TVLine
- 0.000 LUX at CDS Sensor on
- Built In 45 IR LED
- Varifocal Lens 4-9mm
- External Zoom/Focal adjustment
- Waterproof & Vandal Proof
- Cable managed bracket



SPVC-NBI1145V

- 1/3" SO HAD CCD (410K Pixel)
- 550 (Color) / 600 (BW) TVLine
- 0.000 LUX at CDS Sensor on
- Built In 45 IR LED
- Varifocal Lens 4-9mm
- External Zoom/Focal adjustment
- Waterproof & Vandal Proof
- Cable managed bracket

SPVC-NBI1045V

- 1/3" SO HAD CCD
- 420 TVLine
- 0.000 LUX at CDS Sensor on
- Built In 45 IR LED
- Varifocal Lens 4-9mm
- External Zoom/Focal adjustment
- Waterproof & Vandal Proof
- Cable managed bracket



SPIRN-12H

- 1/3" SO HAD CCD (410K Pixel)
- 550 (Color) / 600 (BW) TVLine
- 0.000 LUX at CDS Sensor on
- Built In 12R LED
- Fixed Lens 4mm
- Waterproof & Vandal Proof

SPIRN-12

- 1/3" SO HAD CCD
- 420 TVLine
- 0.000 LUX at CDS Sensor on
- Built In 12 IR LED
- Fixed Lens 4mm
- Waterproof & Vandal Proof

CCTV / DOME CAMERA



SPVC-NVD1200D

- 1/3" SO HAD CCD (410K Pixel)
- DNR (Digital Noise Reduction)
- Motion & Privacy - 4Zone
- 580 (Color) / 700 (BW) TVline
- 0.002 LUX at Sensor on
- Built-In 4-9mm DC Iris lens
- Built in OSD Menu
- Waterproof & Vandal Proof
- 3 Axis Mounting capabilities

SPVC-NVD-1100D

- 1/3" SO HAD CCD (410K Pixel)
- Motion Detection - 64 Area
- Privacy Making - 4Zone
- 550 (Color) / 600 (BW) TVline
- 0.05 LUX at F1.2
- Built-In 4-9mm DC Iris lens
- Built in OSD Menu
- Waterproof & Vandal Proof
- 3 Axis Mounting capabilities



SPVC-NVD1300D

- 1/3" SO New HAD CCD (410K Pixel)
- DNR (Digital Noise Reduction)
- DIS (Digital Image Stabilizer)
- Motion Detection (8Zone)
- Privacy Making (8Zone)
- Sense-Up (X2-X256), Digital Zoom (X10)
- 580 TV Lines (Color) / 700 TV Lines (BW)
- 0.00004 LUX at Sensor on
- DC Varifocal Lens 4-9mm
- Built in OSD Menu
- Waterproof & Vandal Proof
- 3 Axis Mounting capabilities



SPIRDH-100/12

- 1/3" SO HAD CCD (410K Pixel)
- 550 (Color) / 600 (BW) TVline
- 0.000 LUX at CDS Sensor on
- Built In 12R LED
- Fixed Lens 4mm
- 100mm Dome Housing

SPIRDN-100/12

- 1/3" SO HAD CCD
- 420 TVline
- 0.000 LUX at CDS Sensor on
- Built In 12R LED
- Fixed Lens 4mm
- 100mm Dome Housing



SPVC-VD1100D

- 1/3" SO HAD CCD (410K Pixel)
- 550 (Color) / 600 (BW) TVline
- 0.05 LUX at F1.2
- DC Varifocal Lens 4-9mm
- Waterproof & Vandal Proof

SPVC-VD1000D

- 1/3" SO HAD CCD
- 420 TVline
- 0.1 LUX at F1.2
- DC Varifocal Lens 4-9mm
- Waterproof & Vandal Proof



SPIRDH-100/24

- 1/3" SO HAD CCD (410K Pixel)
- 550 (Color) / 600 (BW) TVline
- 0.000 LUX at CDS Sensor on
- Built In 24R LED
- Fixed Lens 4mm
- 100mm Dome Housing

SPIRDN-100/24

- 1/3" SO HAD CCD
- 420 TVline
- 0.000 LUX at CDS Sensor on
- Built In 24R LED
- Fixed Lens 4mm
- 100mm Dome Housing



SPVC-D110D

- 1/3" SO HAD CCD (410K Pixel)
- 550 (Color) / 600 (BW) TVline
- 0.05 LUX at F1.2
- DC Varifocal Lens 4-9mm
- 100mm Dome Housing
- Option: Fixed Board Lens

SPVC-D100D

- 1/3" SO HAD CCD
- 420 TVline
- 0.1 LUX at F1.2
- DC Varifocal Lens 4-9mm
- 100mm Dome Housing
- Option: Fixed Board Lens



SPVC-D1300D

- 1/3" SO New HAD CCD (410K Pixel)
- DNR (Digital Noise Reduction)
- DIS (Digital Image Stabilizer)
- Motion & Privacy (8Zone)
- Sense-Up (X2-X256)
- 0.00004 LUX at Sensor on
- 580 (Color) / 700 (BW) TV Lines
- DC Varifocal Lens 4-9mm
- Built in OSD Menu
- 3 Axis Mounting capabilities

SPVC-D1200D

- 1/3" SO HAD CCD (410K Pixel)
- DNR (Digital Noise Reduction)
- Motion & Privacy - 4Zone
- 580 (Color) / 700 (BW) TVline
- 0.002 LUX at Sensor on
- Built-In 4-9mm DC Iris lens
- Built in OSD Menu
- Waterproof & Vandal Proof
- 3 Axis Mounting capabilities

SPVC-D1100D

- 1/3" SO HAD CCD (410K Pixel)
- Motion Detection - 64 Area
- Privacy Making - 4Zone
- 550 (Color) / 600 (BW) TVline
- 0.05 LUX at F1.2
- Built-In 4-9mm DC Iris lens
- Built in OSD Menu
- Waterproof & Vandal Proof
- 3 Axis Mounting capabilities



SPDH-80

- 1/3" SO HAD CCD (410K Pixel)
- 550 (Color) / 600 (BW) TVline
- 0.05 LUX at F1.2
- Fixed Lens 3.6mm
- 100mm Dome Housing

SPDN-80

- 1/3" SO HAD CCD
- 420 TVline
- 0.1 LUX at F1.2
- Fixed Lens 3.6mm
- 80mm Dome Housing



SPDN-110

- 1/3" SO HAD CCD (410K Pixel)
- 550 (Color) / 600 (BW) TVline
- 0.05 LUX at F1.2
- Fixed Lens 3.6mm
- 100mm Dome Housing

SPDN-100

- 1/3" SO HAD CCD
- 420 TVline
- 0.1 LUX at F1.2
- Fixed Lens 3.6mm
- 100mm Dome Housing



SPVC-D1310D

- 1/3" SO New HAD CCD (410K Pixel)
- DNR (Digital Noise Reduction)
- DIS (Digital Image Stabilizer)
- Motion & Privacy (8Zone)
- Sense-Up (X2-X256)
- 0.00004 LUX at Sensor on
- 580 (Color) / 700 (BW) TV Lines
- DC Varifocal Lens 4-9mm
- Built in OSD Menu
- 3 Axis Mounting capabilities

SPVC-D1210D

- 1/3" SO HAD CCD (410K Pixel)
- DNR (Digital Noise Reduction)
- Motion & Privacy - 4Zone
- 580 (Color) / 700 (BW) TVline
- 0.002 LUX at Sensor on
- Built-In 4-9mm DC Iris lens
- Built in OSD Menu
- Waterproof & Vandal Proof
- 3 Axis Mounting capabilities

SPVC-D1110D

- 1/3" SO HAD CCD (410K Pixel)
- Motion Detection - 64 Area
- Privacy Making - 4Zone
- 550 (Color) / 600 (BW) TVline
- 0.05 LUX at F1.2
- Built-In 4-9mm DC Iris lens
- Built in OSD Menu
- Waterproof & Vandal Proof
- 3 Axis Mounting capabilities



SPDH-1000SD

- 1/3" SO HAD CCD (410K Pixel)
- 550 (Color) / 600 (BW) TVline
- 0.000 LUX at CDS Sensor on
- Built In 12R LED
- Fixed Lens 4mm
- Waterproof & Vandal Proof

CCTV / GIMBAL SHAPED DOME CAMERA



SPVC-DI1145D

- 1/3" SO New HAD CCD (410K Pixel)
- 550 (Color) / 600 (BW) TVline
- 0.000 LUX at CDS Sensor on
- Built In 45R LED
- DC Varifocal Lens 4-9mm
- External Zoom / Focal adjustment
- Waterproof & Vandal Proof
- 3 Axis Mounting capabilities
- Option: Silver, Dark grey, Black color



(White) (Silver) (Dark Grey) (Black)



SPVC-DI1145V

- 1/3" SO New HAD CCD (410K Pixel)
- 550 (Color) / 600 (BW) TVline
- 0.000 LUX at CDS Sensor on
- Built In 45R LED
- Varifocal Lens 4-9mm
- External Zoom / Focal adjustment
- Waterproof & Vandal Proof
- 3 Axis Mounting capabilities



SPVC-DI1045V

- 1/3" SO HAD CCD
- 420 TVline
- 0.1 LUX at F1.2
- Varifocal Lens 4-9mm
- 0.000 LUX at CDS Sensor on
- Built In 45R LED
- External Zoom / Focal adjustment
- Waterproof & Vandal Proof
- 3 Axis Mounting capabilities



SPVC-DI1140D

- 1/3" SO New HAD CCD (410K Pixel)
- 550 (Color) / 600 (BW) TVline
- 0.05 LUX at F1.2
- Varifocal Lens 4-9mm
- External Zoom / Focal adjustment
- Waterproof & Vandal Proof
- 3 Axis Mounting capabilities



SPVC-DI1024

- 1/3" SO HAD CCD
- 420 TVline
- 0.000 LUX at CDS Sensor on
- Built In 24R LED
- Fixed Lens 4.3mm
- Waterproof & Vandal Proof
- 3 Axis Mounting capabilities



SPVC-DI1155

- 1/3" SO New HAD CCD (410K Pixel)
- 550 (Color) / 600 (BW) TVline
- 0.000 LUX at CDS Sensor on
- Built In 55R LED
- Fixed Lens 6.0mm
- Waterproof & Vandal Proof
- 3 Axis Mounting capabilities



SPVC-DI1055

- 1/3" SO HAD CCD
- 420 TVline
- 0.1 LUX at F1.2
- Fixed Lens 6.0mm
- Waterproof & Vandal Proof
- 3 Axis Mounting capabilities



SPVC-DI1045D

- 1/3" SO HAD CCD (420TVline)
- 0.1 LUX at F1.2
- DC Varifocal Lens 4-9mm
- 0.000 LUX at CDS Sensor on
- Built In 45R LED
- External Zoom / Focal adjustment
- Waterproof & Vandal Proof
- 3 Axis Mounting capabilities



SPVC-DI1124

- 1/3" SO New HAD CCD (410K Pixel)
- 550 (Color) / 600 (BW) TVline
- 0.000 LUX at CDS Sensor on
- Built In 24R LED
- Fixed Lens 4.3mm
- Waterproof & Vandal Proof
- 3 Axis Mounting capabilities



SPVC-D1040D

- 1/3" SO HAD CCD
- 420 TVline
- 0.1 LUX at F1.2
- DC Varifocal Lens 4-9mm
- External Zoom / Focal adjustment
- Waterproof & Vandal Proof
- 3 Axis Mounting capabilities



SPVC-VMD110

- 1/3" SO New HAD CCD (410K Pixel)
- 550 (Color) / 600 (BW) TVline
- Fixed Lens 3.6mm
- Waterproof & Vandal Proof
- 3 Axis Mounting capabilities

CCTV / NETWORK IP SOLUTIONS



SPTCAM-530N

- 2.0 Megapixel 1/2.5" CMOS Image sensor
- Full HD (1920x1080 30p)
- H.264/MJPEG compression.
- Optical x 10 zoom
- Video bitrate : 32kbps ~ 4Mbps
- Serial data bandwidth : 2,400bps ~ 115,200bps
- Protocols : TCP/IP, Multicast, HTTP, SMTP, FTP, DHCP, PPPoE, DNS, Dynamic DNS
- True CMS : Up to 36 channels live monitoring, recording, search & playback



DOH-240SEWIP

- 1/4" SO Intertine Transfer CCD
- Built-in TDN 23x IP Dome Camera
- H.264/MJPEG compression.
- X230 Zoom control (23X Optical)
- 0.00005 lux at Digital Slow Shutter
- Up to 250 presets
- Private/Dynamic/Global/Static IP
- Waterproof & Vandal Proof



DOH-240SIWIP

- 1/4" SO Intertine Transfer CCD
- Built-in TDN 23x IP Dome Camera
- H.264/MJPEG compression.
- X230 Zoom control (23X Optical)
- 0.00005 lux at Digital Slow Shutter
- Up to 250 presets
- Private/Dynamic/Global/Static IP



SPTCAM-270H

- 1/4" So HAD EX-View CCD Camera.
- WDR (Wide Dynamic Range)
- X432 Zoom control (36X Optical)
- H.264/MJPEG compression.
- 360° continuous pan travel.
- 128 preset / 4 pattern, 8 swing & group
- 8 privacy zones
- Built in fans and heater.
- Waterproof & Vandal Proof



SPTCAM-270L

- 1/4" SO Intertine Transfer CCD
- Built-in TDN 10x IP Dome Camera
- H.264/MJPEG compression.
- X100 Zoom control (10X Optical)
- 360° continuous pan travel.
- 128 preset / 4 pattern, 8 group
- 8 privacy zones
- Waterproof & Vandal Proof



SPIRHN(H)IPVA-90P

- 1/3" So HAD CCD Camera.
- 550 (Color) / 600 (BW) TVline
- Varifocal Lens 4-9mm
- 0.000 LUX at CDS Sensor on
- Built In big 30IR LED
- H.264/MJPEG compression.
- Waterproof & Vandal Proof
- Support Max 30fps @ 720x480 (NTSC)
- 25fps @ 720x576 (PAL)
- Support PDA, Mobile & PC



SPTCAM-531N

- 1/3" So Progressive CCD Camera.
- H.264/MJPEG compression.
- Full HD (1280x960 / 30p)
- Video bitrate : 32kbps ~ 4Mbps
- Serial data bandwidth : 2,400bps ~ 115,200bps
- C / CS Mount Support



SPTCAM-200

- High quality H.264 Algorithm
- Full-duplex audio/video transmission
- 30fps/25fps @ full D1 resolution
- 1:N Multi-casting and relayed data transmission
- De-Interlaced Video at 30fps
- Dynamic IP support with Dynamic DNS
- Power over Ethernet (PoE) support (optional)
- Data storage against network failure (USB2.0)
- Watchdog for system recovery
- Support for PTZ and Controller
- Encoder/Decoder/Duplex selectable



SPIRDNIP-100/12

- 1/3" So HAD CCD Camera.
- 550 (Color) / 600 (BW) TVline
- Fixed 4mm Lens
- 0.000 LUX at CDS Sensor on
- Built In 12IR
- H.264/MJPEG compression.
- Waterproof & Vandal Proof
- Support Max 30fps @ 720x480 (NTSC)
- 25fps @ 720x576 (PAL)
- Support PDA, Mobile & PC

DIGITAL VIDEO RECORDER / PC BASED DVR



SPDBN-960480/32CH

- Monitor and save: Maximum 480/480 frames/second
- Compression Codec: MPEG4
- Video input/output: 32channels
- Video Display: 960F/S, Recording: 480F/S
- Sound support: 32 channels
- Resolution: 320x240, 720x480 (NTSC/PAL)
- Back-up device: CD-RW, HDD, FDD
- Network: Web, LAN, Modem, Flexible IP
- Saving data: IVA (file format), AVI
- Dual E-map, Dual monitor, Privacy security, Quick search Live viewer, Detail & Smart search, Digital zoom, PTZ control, Preset touring, Intelligent pop-up, Two TV out, Multi-Language



SPDBN-960240/32CH

- Compression Codec: MPEG4
- Video input/output: 4~32CH
- Video Display: 960F/S, Recording: 240F/S
- Sound support: 32CH
- Resolution: 320x240, 720x480
- Back-up device: CD-RW, HDD, FDD
- Network: Web, LAN, Modem, Flexible IP
- Saving data: IVA (file format), AVI



SPDBN-480240

- Compression Codec: MPEG4
- Video input/output: 4~16CH
- Video Display: 480F/S, Recording: 240F/S
- Sound support: 16CH
- Resolution: 320x240, 720x480



SPDBN-240240/32CH

- Compression Codec: MPEG4
- Video input/output: 4~32CH
- Video Display/Recording: 240F/S
- Sound support: 16 CH
- Resolution: 320x240, 720x480



SPDBN-120120

- Compression Codec: MPEG4
- Video input/output: 4~16CH
- Video Display/Recording: 120F/S
- Sound support: 16 CH
- Resolution: 320x240, 720x480



SPDBN-480480

- Compression Codec: MPEG4
- Video input/output: 4~16CH
- Video Display: 480F/S, Recording: 480F/S
- Sound support: 16CH
- Resolution: 320x240, 720x480



SPDBN-480120

- Compression Codec: MPEG4
- Video input/output: 4~16CH
- Video Display: 480F/S, Recording: 120F/S
- Sound support: 16CH
- Resolution: 320x240, 720x480



SPDBN-240240/16CH

- Compression Codec: MPEG4
- Video input/output: 4~16CH
- Video Display/Recording: 240F/S
- Sound support: 16 CH
- Resolution: 320x240, 720x480



SPDBN-080070

- Compression Codec: MPEG4
- Video input/output: 4~16CH
- Video Display/Recording: 60F/S
- Sound support: 2 CH
- Resolution: 320x240, 720x480

DIGITAL VIDEO RECORDER / EMBEDDED STANDALONE DVR



SECU-16U2C4N (08U2F2, 04U2D1)

- Real time MPEG-4 recording speed
- Pentaplex function
- Recording resolution: NTSC/PAL (704x480/704x576)
- Recording Frame: 16U2C4N-480/400, 08U2H2-240/200, 04U2D1-120/100F/S
- Embedded Linux
- Max. 3 SATA HDDs supported
- Intelligent and powerful CMS
- Easy backup: DVD-RW, USB & network 4ch audio inputs and 1ch audio output Pre-alarm recording USB mouse control



SPDVR-T8M

- Real time MPEG 8CH Record & display
- Video 8CH & Audio 4CH Input
- CIF & Half D1 resolution recording
- VGA/BNC support
- Pentaplex Support
- DVD-RW & USB Back Up
- Support Powerful CMS

SPDVR-T04L

- Real time MPEG 4CH Record & display
- Video & Audio Input: 4CH
- CIF & Half D1 resolution recording
- VGA/BNC support
- Pentaplex Support
- DVD-RW & USB Back Up
- Support Powerful CMS

SPDVR-T16H

- Real time MPEG 16CH Record & display
- CIF & Half D1 resolution recording
- Video 16CH & Audio 4CH Input
- VGA/BNC support
- Pentaplex Support
- DVD-RW & USB Back Up
- Support Powerful CMS



ST-16

- H.264 DSP CODEC
- Video Input: 16CH
- Audio Input: 4CH
- Embedded Linux OS
- INDIVIDUAL Channel Recording
- VGA Output
- Interfacing External Storage
- Full Graphic Scheduler
- Pre and Post Alarm
- DDNS and Multi port support
- Powerful Client Software
- High-resolution & quality H.264a
- Dual CODEC - independent Network Real Pentaplex Operation

ST-4

- H.264 DSP CODEC
- Video/Audio Input: 4CH
- Embedded Linux OS
- INDIVIDUAL Channel Recording
- VGA Output
- Interfacing External Storage
- Full Graphic Scheduler
- Pre and Post Alarm
- DDNS and Multi port support
- Powerful Client Software
- High-resolution & quality H.264a
- Dual CODEC - independent Network Real Pentaplex Operation



SECU-GVR500

- Real time MJPEG 4CH display
- CIF & Half D1 resolution recording
- VGA/BNC support
- Triplex Support
- USB Back Up



SECU-GVR1600 (GVR800)

- Real time MJPEG 16CH/8CH (GVR800) display
- CIF & Half D1 resolution recording
- VGA/BNC support
- Triplex Support
- USB Back Up



SECU-16S2C4N (16S2C2, 08S2C2, 04S2H1)

- Real time MPEG-4 recording speed
- Pentaplex function
- Recording resolution: NTSC/PAL (704x480/704x576)
- Recording Frame: 16S2C4N-480/400, 16S2C2-480/240, 08S2C2-240/240F/S
- Embedded Linux
- Max. 2 SATA HDDs supported

MOBILE SOLUTION / CAR REAR VIEW CAMERA



SPM-320

- Motorized Tilting Rear View Camera
- Sony 1/3" Super HADCCD: 270K Pixels & 380TV Lines
- High Quality Color Waterproof Camera
- Low-Illumination: 0.1 Lux
- Aluminum Die Cast Housing
- 120° Wide Viewing Angle
- Water-Proof Camera and Cable



SPM-420

- 1/3"± CCD: 270K Pixels
- Low-Illumination: 0.1 Lux
- Aluminum Die Cast Housing
- 60-130° Wide Viewing Angle
- Water-Proof Camera and Cable
- Small & Compact Design
- IP66 Rate



SPM-285

- 1/3"± CCD: 270K Pixels
- High Quality Waterproof Camera
- Low-Illumination: 1 Lux
- Aluminum Die Cast Housing
- 130° Wide Viewing Angle



SPM-220

- Sony 1/3"± HADCCD: 270K Pixels
- High Quality Color Waterproof Camera
- Built-in 6 IR LEDs-0.00 Lux
- Aluminum Die Cast Housing
- 130° Wide Viewing Angle
- Water-Proof Camera and Cable



SPM-270

- 1/3"± CCD: 270K Pixels
- Built-in 7 IR LEDs-0.00 Lux
- Aluminum Die Cast Housing
- 155° Wide Viewing Angle
- Water-Proof Camera and Cable
- Small & Compact Design



SPM-310

- Motorized Tilting Rear View Camera
- 1/3"± 270KsoHADCCD
- High Quality Waterproof Camera
- Low-Illumination: 0.1 Lux
- Aluminum Die Cast Housing
- 130° Wide Viewing Angle
- Built-in 21 IR LEDs
- IP67 Rate



SPM-170

- 1/3"± 270KsoHADCCD
- High Quality Waterproof Camera
- 160° Wide Viewing Angle
- Aluminum Die Cast Housing
- Small & Compact Design
- Water-Proof Camera and Cable



SPM-180

- 1/3"± 270KsoHADCCD
- High Quality Waterproof Camera
- 160° Wide Viewing Angle
- Aluminum Die Cast Housing
- Small & Compact Design
- Water-Proof Camera and Cable



SPM-190

- 1/3"± 270KsoHADCCD
- High Quality Waterproof Camera
- 160° Wide Viewing Angle
- Aluminum Die Cast Housing
- Small & Compact Design
- Water-Proof Camera and Cable

SPM-171

- 1/3"± 270K-C-Mos
- High Quality Waterproof Camera
- 160° Wide Viewing Angle
- Aluminum Die Cast Housing
- Small & Compact Design

SPM-181

- 1/3"± 270K-C-Mos
- High Quality Waterproof Camera
- 160° Wide Viewing Angle
- Aluminum Die Cast Housing
- Small & Compact Design
- Water-Proof Camera and Cable

SPM-191

- 1/3"± 270K-C-Mos
- High Quality Waterproof Camera
- 160° Wide Viewing Angle
- Aluminum Die Cast Housing
- Small & Compact Design
- Water-Proof Camera and Cable

MOBILE SOLUTION / BLACK BOX & MONITOR



SPB-1 (CAR BLACK BOX)

- Dual Camera (1.3 Mega Pixels / 2CH Display)
- Built-in GPS & G-Sensor
- Emergency or Continuous Recording
- Playing Images and Audio Data
- SD Memory Card
- Play VGA
- Battery Monitoring



SPD-6

- MPEG4 DVR+1.8"± TFT LCD Monitor+CMOS Camera+Audio
- Black Box for Vehicle
- Personal Recorder for Military/Police/Man/Detective
- For Home Security and Small Market
- Small portable Digital Recorder
- Built-in Re-Chargeable Battery (5V/1100mAh Li-Ion)
- Work for 4 hours with 1 time charge
- Can be played on the PC/W/O dedicated SW
- SD Memory Type (Max. 8GB)
- Highly Sensitive Voice Recording Function
- Live Image Play Function (MP4 Play)
- Selectable Recording period in Units of 5min. (5/10/15/20/30Min.)



SPD-3

- Triplex (Record/Playback/Live)
- Real Time Quad Display
- High Quality Low Cost Simple Version System
- Stand Alone Type (Non-PC, Non-OS)
- Full/Quad Display Mode Selectable
- Programming MENU in OSD
- Motion Detection Function (230 Lists)
- Remote Control
- Quick Search: Time
- CF Memory
- MJPEG Compression



SPD-7

- Triplex (Record/Playback/Live)
- Quad, Full and Auto Display
- High Quality Low Cost and Full Option System
- Stand Alone Type (Non-PC)
- Remote Control
- Hard Disk Drive & CF Memory Overwrite
- MJPEG Compression
- Mounted GPS Engine
- Mounted G-Sensor
- Vehicle external input signal (blinkers, brakes, safety belt, parking, etc)
- Backup by USB



SPD-4

- Duplex
- Stand Alone Type (Non-PC, Non-OS)
- Full/Quad Display Mode Selectable
- Motion recording
- Programming the MENU in OSD
- Remote Control
- Quick Search: Time
- CF Memory
- MJPEG Compression



SPD-5

- Easy Setup
- Pre-Alarm Recording
- Motion Detection
- Remote Controller
- Low Power Consumption (normal 120mA)
- Sensor-In/Alarm out
- Schedule Setup
- PC Viewer (D5 Player)

PERIPHERALS / IR ILLUMINATOR



SPIR-100

- Minimum illumination: 0 Lux
- The best brightness under perfectly dark conditions
- Hybrid Chip tech-50,000-hour lifetime
- Compatible with other IR camera or D&N camera
- Maximum filming distance: 150m
- With Two Illuminators - Max. up to 250-300m
- Radiating angle: 20 degrees
- Power: DC12V, 1.5A



CP-40B

- Lamp type : Xenon Metal Lamp
- Lamp Power : 40W
- Max.Luminous Flux : 4,000lm
- Lamp Life : Up to 2,500 Hrs
- Color Temperature : 4,300 K
- Illumination Distance : Up to 1.0 Km ~ 1.5 Km
- Input Voltage : D.C 10V ~ 18V
- Operation Current : 4.0A
- Weight : 3 Kg
- Dimension : 240mm long



SPIR-60

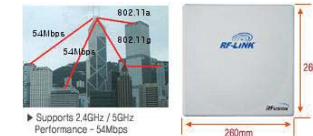
- Minimum illumination: 0 Lux
- The best brightness under perfectly dark conditions
- Hybrid Chip tech-50,000-hour lifetime
- Compatible with other IR camera or D&N camera
- Maximum filming distance: 100m
- With Two Illuminators - Max. up to 150-200m
- Radiating angle: 20 degrees
- Power: DC12V, 1.5A

PERIPHERALS / DIGITAL & ANALOG WIRELESS SYSTEM



RFANA-58

- Video Input/Output : 1 Port 1.0V/75ohm, Sync negative
- Divx, MPEG4... : H/W Divx 5.0, MPEG-4, MPEG-2, MPEG-1
- Video Resolution : D1 (720x480)
- Transferring Frame : 1~30 fps
- Video Bandwidth : 32bps ~ 6Mbps
- Audio Compression Codec : ADPCM / MP3
- Sensor : Input-1 (Dry Connect), Output-1 (Relay Connect)
- Full Duplex (Bi-directional communication system)
- Audio Connector type : 3.5mm input and output stereo jacks
- Power : 12V DC +/- 10%, 500mA at 12V DC
- Ethernet : 10/100 Base-T
- Protocol : TCP/IP, ICMP, HTTP, SMTP, ARP, DHCP, PPPoE, SNMP



- 802.11b/g Frequency - [2.4-2.483GHz]
- 802.11a Frequency - [5.15-5.35GHz, 5.725-5.825GHz]
- Bridge / Access Point / Repeater / AP Client
- Multi SSID
- Firewall and NAT
- PPPoE - Client
- STP (Spanning Tree Protocol)

- Wi-Fi Security
- Bridging - Layer2 Forwarding
- Bandwidth Management
- HotSpot - Radius Client, Mac address Authentication
- DHCP - Server, Client, DHCP Relay
- VLAN - Vlan (802.1Q)
- Mrtg Support - Mrtg client Built In



RF - A5805 TX



RF - A5805 Rx

RF - A5805(RX / TX)

- Video Input/Output : 1 Port 1.0V/75ohm, Sync negative
- Divx, MPEG4... : H/W Divx 5.0, MPEG-4, MPEG-2, MPEG-1
- Video Resolution : D1 (720x480)
- Transferring Frame : 1~30 fps
- Video Bandwidth : 32bps ~ 6Mbps
- Audio Compression Codec : ADPCM / MP3
- Sensor : Input-1 (Dry Connect), Output-1 (Relay Connect)
- Full Duplex (Bi-directional communication system)
- Audio Connector type : 3.5mm input and output stereo jacks
- Power : 12V DC +/- 10%, 500mA at 12V DC
- Ethernet : 10/100 Base-T
- Protocol : TCP/IP, ICMP, HTTP, SMTP, ARP, DHCP, PPPoE, SNMP

PERIPHERALS / CONTROLLER



WTX-1200

- controls from 1-255 cameras.
- Multiple protocol supported in each channel.
- RS-485/RS-422 communication (Tx:3 port, Trx:1 port).
- Programmable user preferences (Preset, Tour, Pattern, etc.)
- Built-in 3-Axis proportional joystick.
- Easy upload programmed data via serial communication.
- USB mouse function.
- Built-in 2 lines character LCD.
- User Password support.
- programmable transmission speed for ID
- Operate with 9V battery.
- DVR interface.



DCK-255

- Controller for the remote control of CCTV Devices:
- Power, Pan/Tilt, Zoom Lens, AUX
- Controls up to maximum 255 CCTV receivers (Cameras)
- Preset control: 128 Positions memory set for each camera
- Built-in requital ability for electricity failure:
- Can be connected with up to 8 sub-keyboards
- CE, FCC

PERIPHERALS / PORTABLE SEARCH LIGHT



CP-35NP1

- Distance : Over 1.5 Km
- Lamp : HID Metal halide lamp
- Lifespan : Over 3,000 Hrs continuously
- Power : 35W
- Velocity : 3,400 lm
- Weight : 1.7 Kg
- Input : D.C 10 ~ 18V
- Current : D.C 3.5 AMP
- Dimension : 90mm*295mm*130mm



PF-40

- Distance : Over 1.5 Km
- Lamp : Xenon Metal halide lamp
- Lifespan : Over 3,000 Hrs continuously
- Power : 40W
- Velocity : 4,000 lm
- Weight : 1.8 Kg
- Input : D.C 10-18V
- Current : D.C 4.0 AMP
- Dimension : 92mm*310mm*115mm



27dbi long range Ant



Out door waterproof Encloser

RF - A5805

- RF-A5805 (Tx/Rx) 5.725-5.825GHz
- Frequency CH1: 5.733, CH2: 5.752, CH3: 5.771, CH4: 5.790, CH5: 5.809
- Channel (GHz) FM/16dBm
- Modulation / RF power -84dBm
- Receiver Sensitivity 30Km (27dbi antenna, line of sight)
- Range NTSC or PAL
- RF connector SMA Female
- Video format BNC Female, Impedance - 75Ω, Input Level- 1V peak to peak
- Video connector RCA Female Stereo, Impedance-600Ω, Input Level- 2V p to
- Audio connector DC 12V 500mA
- Operating Voltage Tx : 145mA Rx : 170mA
- Current consumption 188 x 106 x 30.5 mm / 440g
- Dimension / Weight Aluminum
- Material

PERIPHERALS / SURGE



SPeXGD-CCTV

- SPeXGD.CCT V& SPeXGD10-CCTV are heavy-duty wide-band surge protectors with a Coaxial cable located outside
- Clamping Voltage: 6V, 25V
- Protection Line: Center & Shield
- Series Resistance: 2.5 ohms
- Enclosure: NEMA 1
- Connections: BNC(F/F)
- Coaxial: Serial BNC,
- Po: Parallel
- Protection: Coaxial & Data OKA Line
- Power: 40KA P
- Noise Protection: Noise Protected
- Safety & Performance: Meets UL497 Spec.



SPeXGD10-CCTV



SPNDP4-XXX

- There are triple-Stage Hybrid data line surge protectors which are combined with brute force high voltage protection
- Protection Wire: 2 Wire 4 Wire
- Protection: Heavy duty protection
- Clamping Voltage: 6V, 25V, 40V, 65V, 200V
- Protection step: Triple Stage circuit
- Protection type: Isolated Loop
- Response Time: < 1 nanosecond
- Surge capacity: 10KA (peak/line), 20KA (Pair)
- Connector: Screw Terminals



SPNDP2-XXX

PERIPHERALS / HYBRID STREET LAMP



DHS-HS90-01

- Sunlight Battery: 200Wp
- Wind Power: 1KW/DC24V/DC12V
- Power: 20A/DC24V
- Inverter: AC220V/1KW
- Storage battery: 200Ah
- Lamp: AC 90W
- Pipe Material: STS304
- Pipe Height: 10M
- Day Usage: 10H
- Usage Period: 3 Days



DHS-HS65-01

- Sunlight Battery: 200Wp
- Wind Power: 500W/DC12V
- Power: 20A/DC12V
- Inverter: AC220V/500W
- Storage battery: 300Ah
- Lamp: AC 65W
- Pipe Material: STS304
- Pipe Height: 10M
- Day Usage: 10H
- Usage Period: 3 Days



SPS-L1125

- Sunlight Battery: 100Wp (110*1)
- Power: 12V/10Ah
- Inverter: 220V (150W)
- Storage battery: 100Ah
- Lamp: 25W
- Pipe Material: SUS 304
- Pipe Height: 5M
- Day Usage: 10H
- Usage Period: 3 Days

CERTIFICATIONS / ISO CERTIFICATION



ISO 9001



ISO 14001

APPROVAL / PRODUCTS' APPROVAL

